



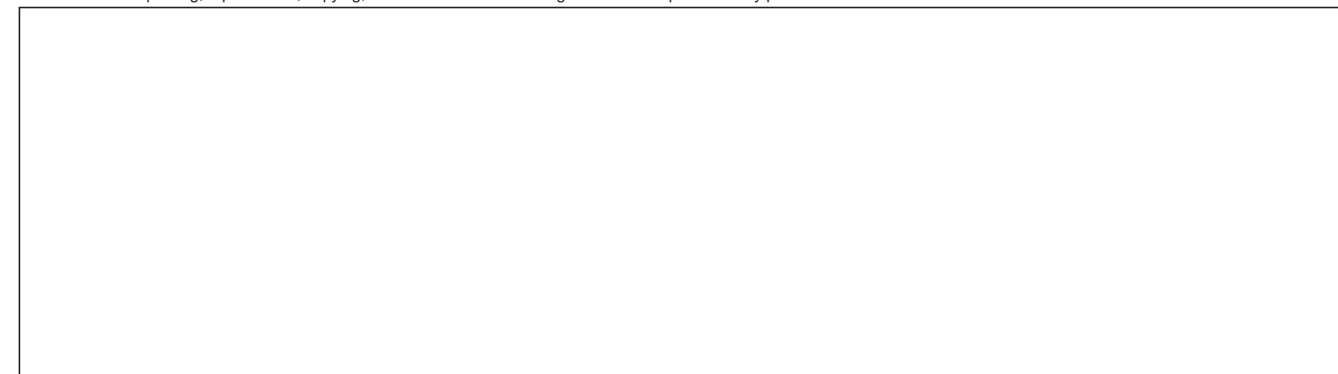


Nabtesco

Nabtesco Corporation

Europe and Africa	Nabtesco Precision Europe GmbH Tiefenbroicher Weg 15, 40472 Düsseldorf, Germany TEL: +49-211-173790 FAX: +49-211-364677 E-MAIL: info@nabtesco.de www.nabtesco.de	
North and South America	Nabtesco Motion Control Inc. 23976 Freeway Park Drive, Farmington Hills, MI 48335, USA TEL: +1-248-553-3020 FAX: +1-248-553-3070 E-MAIL: engineer@nabtescomotioncontrol.com www.nabtescomotioncontrol.com	
China	Shanghai Nabtesco Motion-equipment Co., Ltd. Room 1706, No. 388 Fu Shan Road, Pudong New Area, Shanghai 200122, China TEL: +86-21-3363-2200 FAX: +86-21-3363-2655 E-MAIL: info@nabtesco-motion.cn www.nabtesco-motion.cn	
India	Nabtesco India Private Limited No. 506, Prestige Meridian - II No.30/8, M.G. Road, Bangalore-560 001 India TEL: +91-80-4123-4901 FAX: +91-80-4123-4903	
Asia and others	Nabtesco Corporation Osaka Sales Office 21st Fl, Dojima Avanza, 1-6-20 Dojima, Kita-ku, Osaka 530-0003, Japan TEL: +81-6-6341-7180 FAX: +81-6-6341-7182 Tsu Plant 594 Icchoda, Katada-cho, Tsu, Mie 514-8533, Japan TEL: +81-59-237-4600 FAX: +81-59-237-4610 E-MAIL: P_information@nabtesco.com http://precision.nabtesco.com/	

- Nabtesco, RV are registered trademarks or trademarks of Nabtesco Corporation.
- Specifications are subject to change without notice.
- The PDF data of this catalog can be downloaded from the following website.
<http://precision.nabtesco.com/>
 If any addition or modification is made to the published information, the PDF data may be updated before the printed catalog.
 Due to this, please note that some contents of the PDF data may be changed or revised from those in this catalog.
- Unauthorized reprinting, reproduction, copying, or translation of this catalog in whole or in part is strictly prohibited.

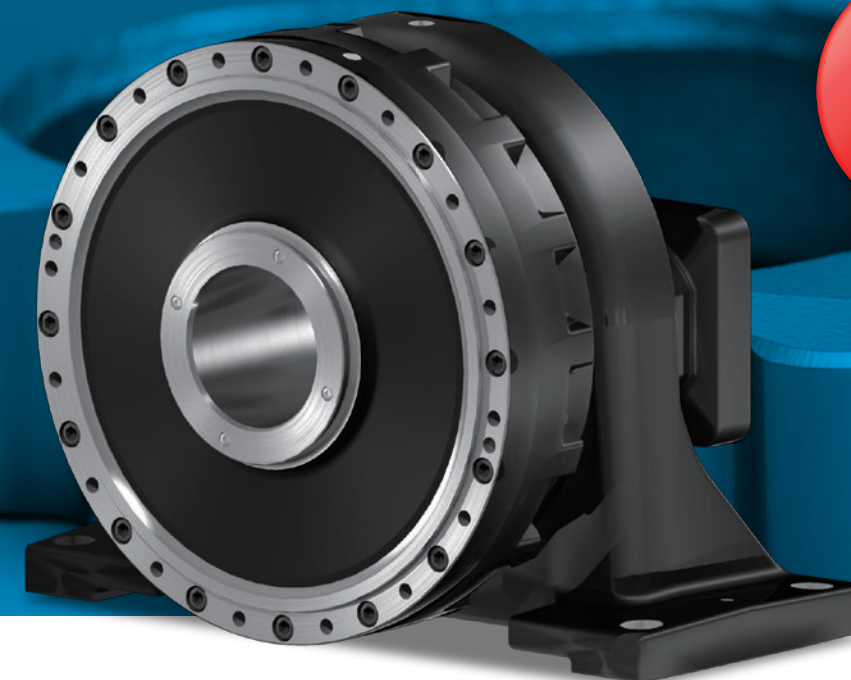


RV[®] Precision Reduction Gear RV[™]

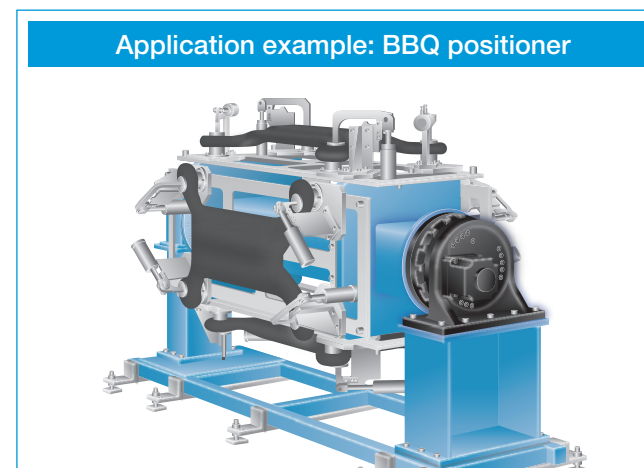
High Precision Gearhead equipped with Base Flange

RH-320CA

**New
release**



Gearhead optimal for large BBQ positioners
New flat profile RH-320CA units are now available!
 Making more compact positioner design possible



Features

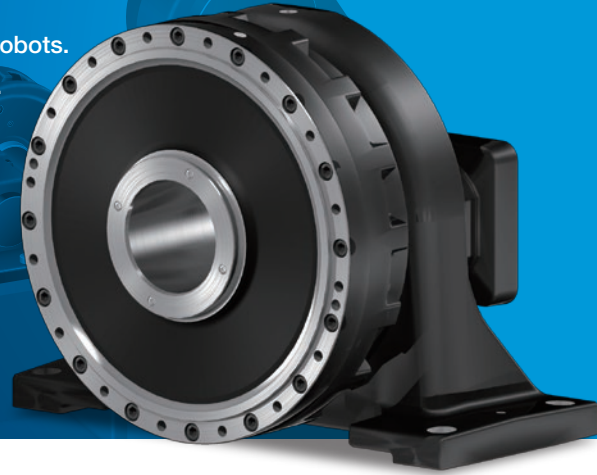
- ▶ Utilizes our precision reduction gear RV[™] technology developed specifically for industrial robots, providing exceptional compatibility when used with robot applications
- ▶ Can be used with external shaft motors from many robot manufacturers
- ▶ Integrated base flange creates a flatter profile a flatter profile

RH-320CA



Features

- Gearhead uses our RV™ precision reduction gear as a base, ensuring outstanding precision, torque and moment. The RV™ series has a proven record for excellence with industrial robots.
- Stable base flange structure makes it easy to attach to any system.
- External shaft motors for almost any type of robot can be installed.
 - Including Fanuc, Yaskawa, Fujikoshi, Omron, Kawasaki Heavy Industries, Mitsubishi Electric, Panasonic Smart Factory Solutions
- Flat profile reduces the width of attached system.
- Large hollow diameter (ø120 mm).
- Pre-lubricated with grease (RV GREASE).
- Side grease supply/discharge port (easier to replace grease).



Rating Table

Model	RH-320CA
Speed ratio	152
Rated torque	3,136 Nm (320 kgf-m)
Allowable acceleration/deceleration torque	7,840 Nm (800 kgf-m)
Momentary maximum allowable torque	15,680 Nm (1,600 kgf-m)
Rated output speed	15 rpm
Allowable output speed (Reference)	25 rpm
Rated service life	6,000 h
Backlash/Lost motion	Max. 1 arc.min
Torsional rigidity	1,960 Nm/arc.min
Allowable moment*1	20,580 Nm (2,100 kgf-m)
Maximum thrust load*1	29,400 N (3,000 kgf-m)
Maximum carrying capacity	3,000 kg
Moment of inertia $I=GD^2/4^*2$	$9.01 \times 10^{-4} \text{ kg-m}^2$
Operating range	Endless
Main unit weight*3	212 kg

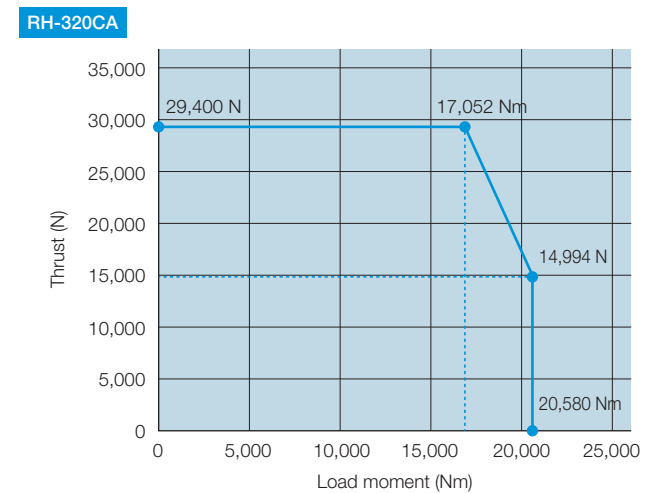
Note: The allowable output speed may be limited by heat depending on the operation rate and/or the ambient temperature.

*1: Refer to the maximum thrust load and the allowable moment diagram.

*2: The inertia moment value is for the reduction gear. It does not include the inertia moment for the input spline.

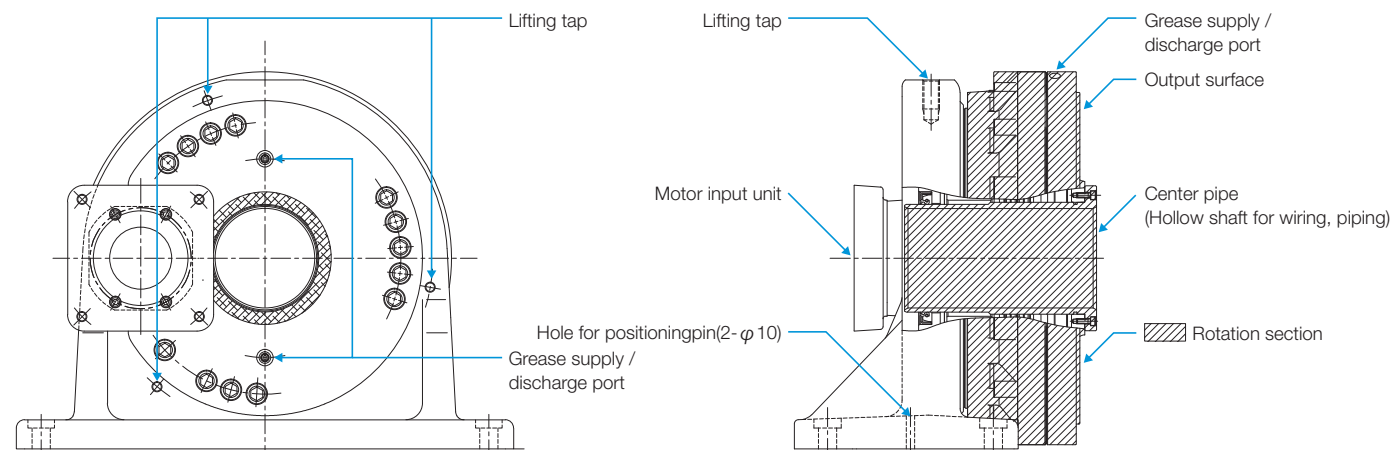
*3: The weight of the main unit varies depending on the type of motor.

Allowable moment and maximum thrust load



Note: When the load moment and the axial load are applied concurrently, ensure that the reduction gear is used within the corresponding allowable moment range, which is indicated in the allowable moment diagram.

Cross-sectional view (with part names)



External dimensions

Motor connection details:

Motor model	Motor shaft	Motor range dimensions	Motor length
HC-SR3E2	スチール軸	50	L176
SPS-V37ANA-YR11	スチール軸	40	D176
SPS-V37ANA-YR11	ステンレス軸	40	D176
MF MASS20A-V3	スチール軸	40	D220
MF MASS20A-V3	ステンレス軸	40	D220
PR002E450L-CX2A	チタン軸	40	D220
AP1025	スチール軸	50	D176
AP1025	ステンレス軸	50	D176

Notes:

- ※1: 仕組は製品改良のため、予告なしに変更することがあります。
- ※2: モータ込みの外形寸法図が必要な場合は、別途お問い合わせください。
- ※3: 仕組は製品改良のため、予告なしに変更することがあります。
- ※4: モータ込みの外形寸法図が必要な場合は、別途お問い合わせください。